

Main Post Office Renovation

Philadelphia, Pennsylvania

Owner

Brandywine Realty Trust

Architect

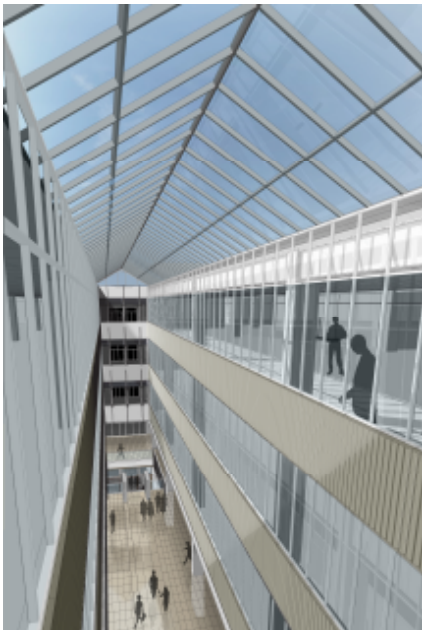
Bohlin Cywinski Jackson
Main Post Office Renovation

Completion Date

2010

Total Area

900,000 sf Main Post Office



When the Internal Revenue Service looked to consolidate its northeast operations at a single location, it found a new home in a venerable post office along banks of Philadelphia's Schuylkill River. The renovated Art Deco post office will accommodate approximately 5,000 IRS employees.

The 900,000 square foot limestone and steel post office, completed in 1935, required blast hardening and perimeter protection. Substantial structural reframing was needed for new elevators supported above the existing rail lines. A four-story "light well" cut in the central section of building, harnesses natural light in support of Leadership in Energy and Environmental Design (LEED) Certification. The light well is tied to the first floor through two monumental stairs at the east and west ends of the building. Infill of the existing first floor loading dock provides a continuous first floor plate by placing lightweight concrete on expanded polystyrene. The project also includes the addition of an outdoor dining area, outdoor child care play area, and a mechanical room addition adjacent to the rail lines.

Seismic evaluation of the structure was performed in accordance with ASCE/SEI 31-03. In addition, a condition assessment of the existing viaduct structure was performed. Rehabilitation design and construction oversight services were provided.