

30 Lincoln Plaza

New York, New York

Client

Millstein Properties Corp.

Landscape Architect

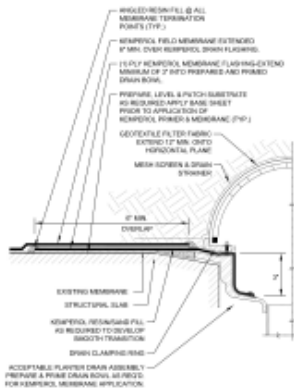
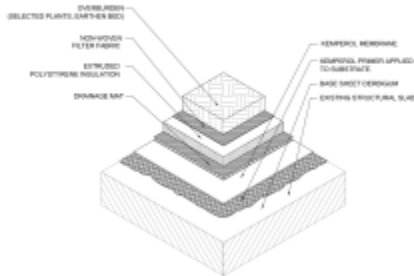
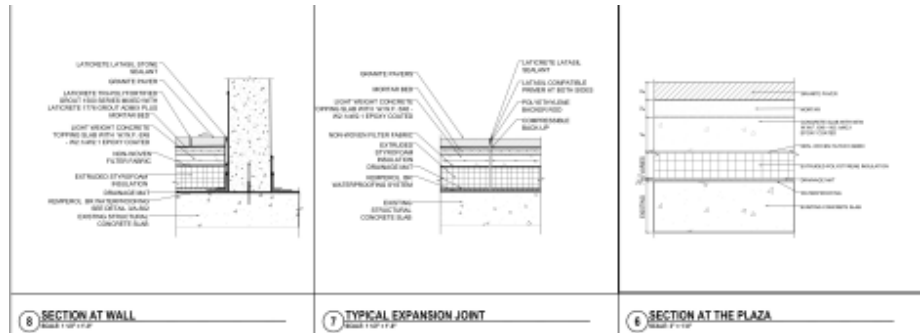
Quennell Rothschild & Partners, LLP

Construction Manager

Plaza Construction

Total Area

24,700 sf



This steel-level public plaza on the exterior of a high-rise residential building in Manhattan’s Upper West Side features several commercial stores, the main entrance to a movie theater, access to a parking garage and five movie theaters that extend below the plaza.

The project consists of demolishing the plaza to the concrete structural slab, providing new waterproofing, and building a newly-renovated plaza. The design includes new planters, benches, paver areas, water fountains, sculptures and light features.

Thornton Tomasetti provided structural analysis and design, waterproofing, mechanical, electrical, and plumbing services to the client, in coordination with the landscape architect’s design. We met the challenge of coordinating the various load capacities of the structural slab with the demands of increased loads from the new design. Construction of the project is currently on hold.