

Hong Kong Convention and Exhibition Center Extension

Hong Kong

Owner

The Hong Kong Trade Development Council

Client/Architect

Wong & Ouyang

Completion Date

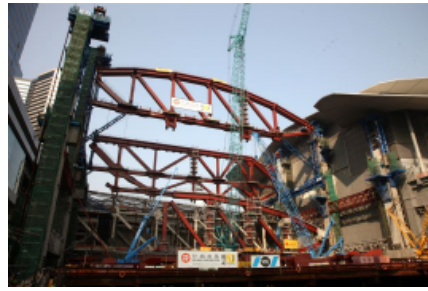
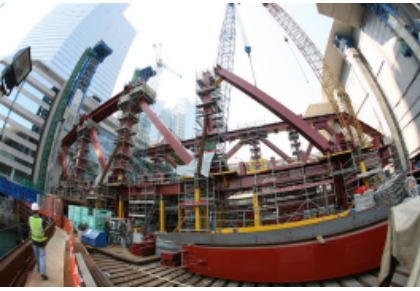
April 2009

Construction Cost

HK \$1.4 billion

Total Area

47,000 m² (19,400 m² addition)



The expansion of the Hong Kong Convention and Exhibition Center provides additional 19,400 square meters of exhibition space, which is equivalent to 1,000 booths, in a structure that connects and integrates the facility's two buildings. The main feature of this project is the designed of the 81-meter long-span roof trusses supporting three levels of convention floors by hangers over a water channel. Each hanger comprises four large, rolled wide-flange column sections, helping make the center the longest-span commercial structure in Hong Kong.

The expansion is achieved without reclamation and almost within the facility's existing envelope. The additional space allows mega trade fairs anchored at the Center and Exhibition Center to keep growing to become the world's largest for their industries. The need is urgent because of rising competition from other cities in the region with larger exhibition facilities.

Thornton Tomasetti provided subconsulting services to Wong and Ouyang (civil/structural engineer), including structural connection design, structural auditing, value engineering and construction phase structural consultation.

